

**SPECIAL DISTRICT PUBLIC DISCLOSURE DOCUMENT**

**BROMLEY PARK METROPOLITAN DISTRICT NO. 2**

As required pursuant to Section 32-1-104.8 of the Colorado Revised Statutes (“**C.R.S.**”), this Public Disclosure Document has been prepared by Bromley Park Metropolitan District No. 2 (the “**District**”) to provide information regarding the District.

**DISTRICT’S POWERS**

The powers of the District as authorized by Section 32-1-1004, C.R.S. and under its Service Plan, as approved by the Board of County Commissioners of the County of Adams (“**County**”) on November 19, 1984, are to plan for, design, finance, acquire, construct, install, certain public improvements, including but not be limited to, streets, water, sanitary and storm sewer, transportation, television relay, and park and recreation improvements.

**DISTRICT’S SERVICE PLAN**

The District’s Service Plan, which can be amended from time to time, includes a description of the District’s powers and authority. A copy of the District’s Service Plan is available from the Division of Local Government in the State Department of Local Affairs (“**Division**”).

The Bromley Park Metropolitan District No. 2 is authorized by Title 32 of the Colorado Revised Statutes to use a number of methods to raise revenues for capital needs and general operations costs. These methods, subject to the limitations imposed by Section 20 of Article X of the Colorado Constitution (“**TABOR**”), include issuing debt, levying taxes, and imposing fees and charges. Information concerning District directors, management, meetings, elections, and current taxes are provided annually in the Notice to Electors described in Section 32-1-809(1), C.R.S., which can be found at the District office, on file at the Division, or on file at the office of the Clerk and Recorder of Adams and Weld Counties.

**DISTRICT MAP**

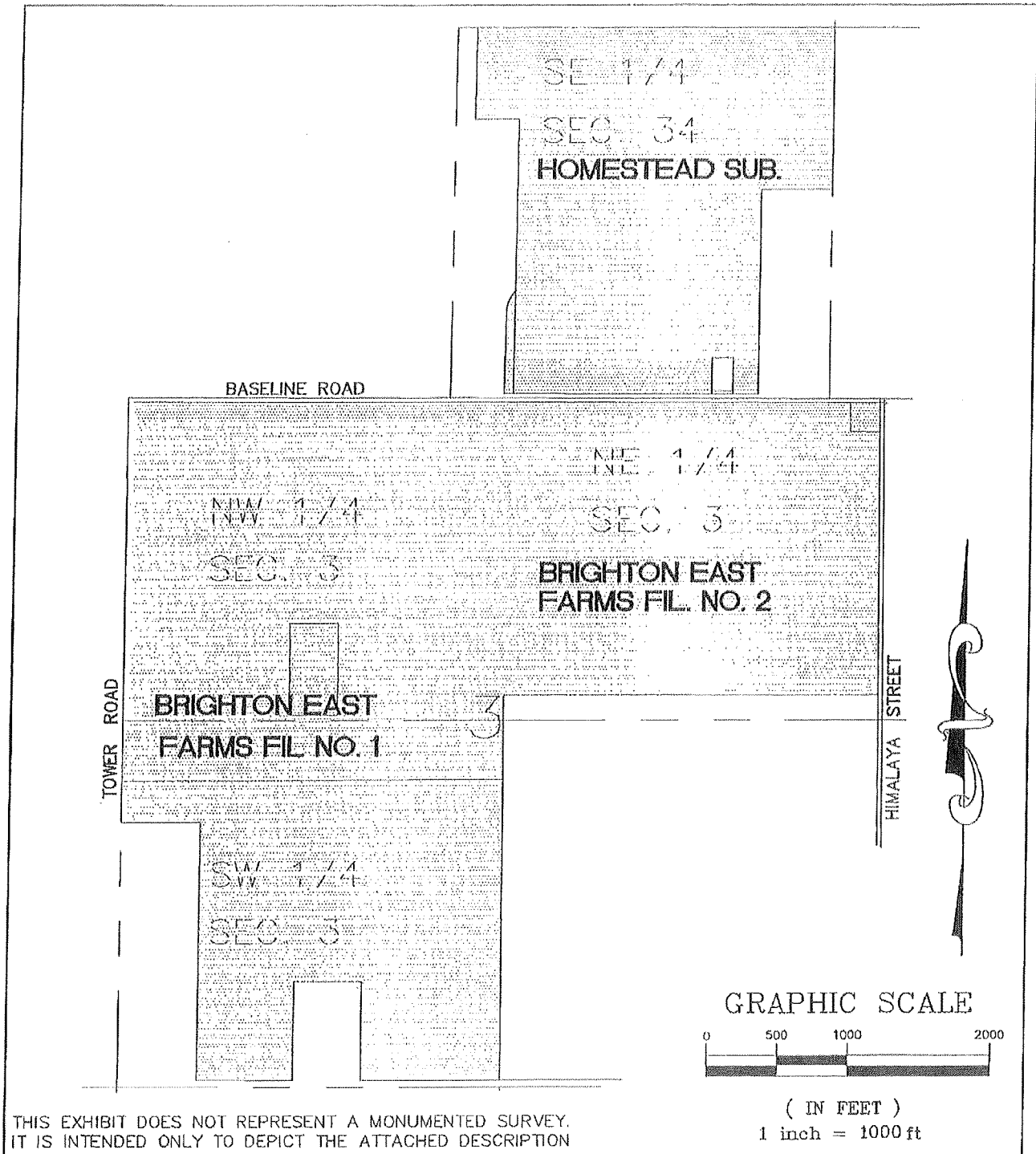
A map of the District’s boundaries is attached hereto as Exhibit A.

Dated this 10<sup>th</sup> day of October, 2014.

**EXHIBIT A**

**District Map**

BROMLEY PARK  
METROPOLITAN DISTRICT NO 2



THIS EXHIBIT DOES NOT REPRESENT A MONUMENTED SURVEY.  
IT IS INTENDED ONLY TO DEPICT THE ATTACHED DESCRIPTION



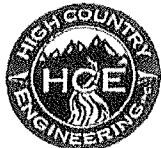
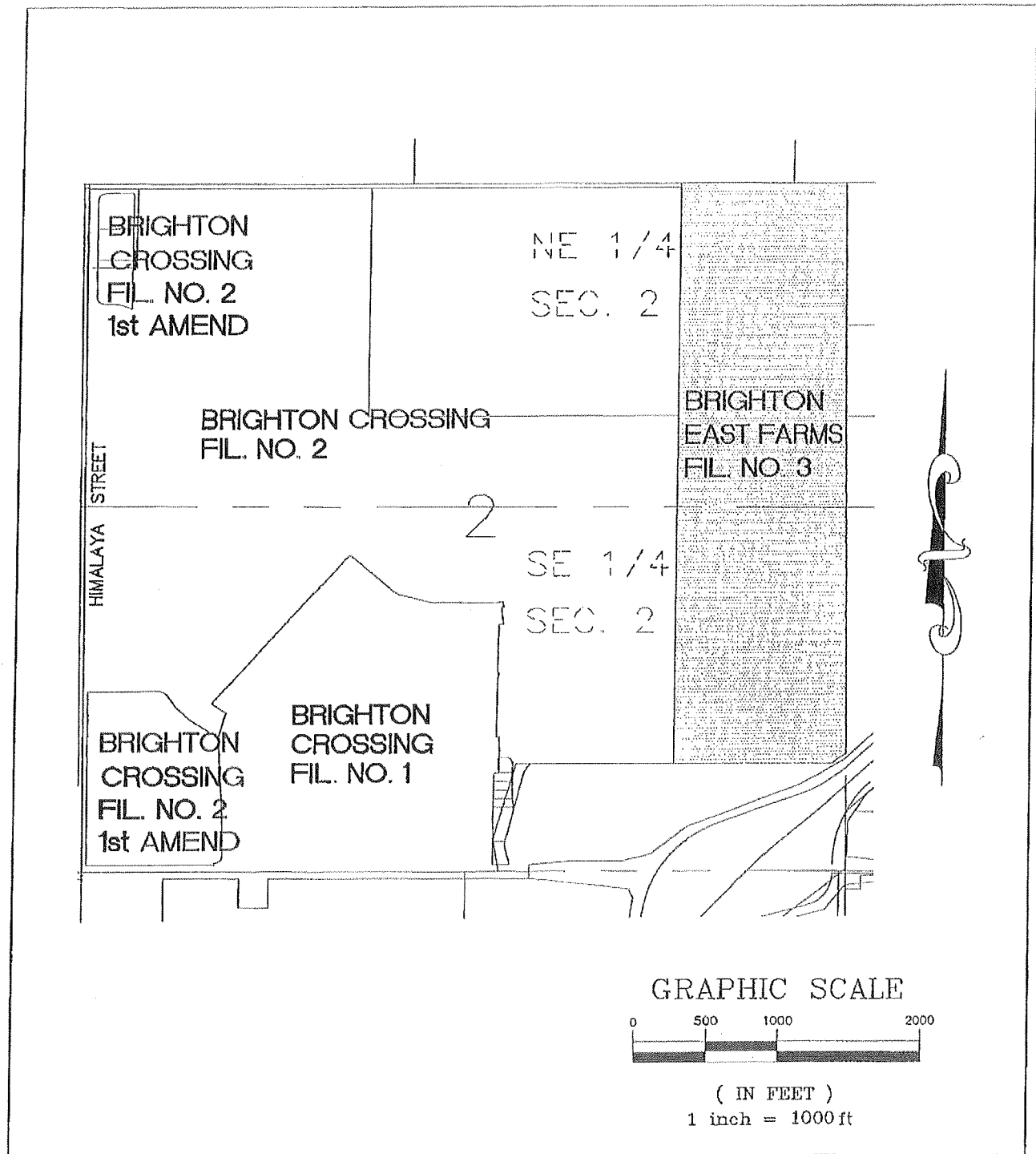
**HIGH COUNTRY ENGINEERING, INC.**

14 INVERNESS DRIVE EAST, STE F-120, ENGLEWOOD, CO 80112  
PHONE (303) 925-0544 FAX (303) 925-0547  
1517 BLAKE AVENUE, STE 101, GLENWOOD SPRINGS CO 81601  
PHONE (970) 945-8676 FAX (970) 945-2555  
WWW.HCENG.COM

DATE:	05/25/05
FILE:	J:/EX/BROM METRO DIST2
PROJECT NO.:	202-2607
DRAWN BY:	JMM

EXHIBIT \_\_\_\_\_

PAGE 3 OF 4



**HIGH COUNTRY ENGINEERING, INC.**

14 INVERNESS DRIVE EAST, STE F-120, ENGLEWOOD CO 80112  
 PHONE (303) 925-0544 FAX (303) 925-0547

1517 BLAKE AVENUE, STE 101, GLENWOOD SPRINGS CO 81601  
 PHONE (970) 945-8676 FAX (970) 945-2955  
 WWW.HCENG.COM

DATE:	05/25/05
FILE:	J./EX/BROM METRO DIST2
PROJECT NO:	202-2607
DRAWN BY:	JMM

EXHIBIT \_\_\_\_\_

PAGE 4 OF 4